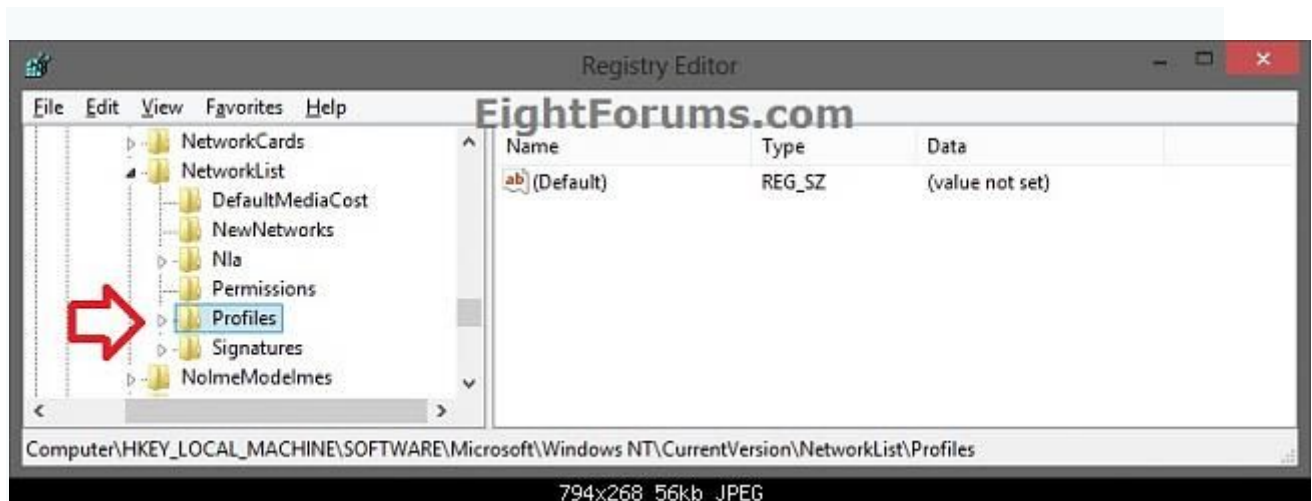


# Set Network to be Private or Public in Windows 8 and 8.1 in Registry

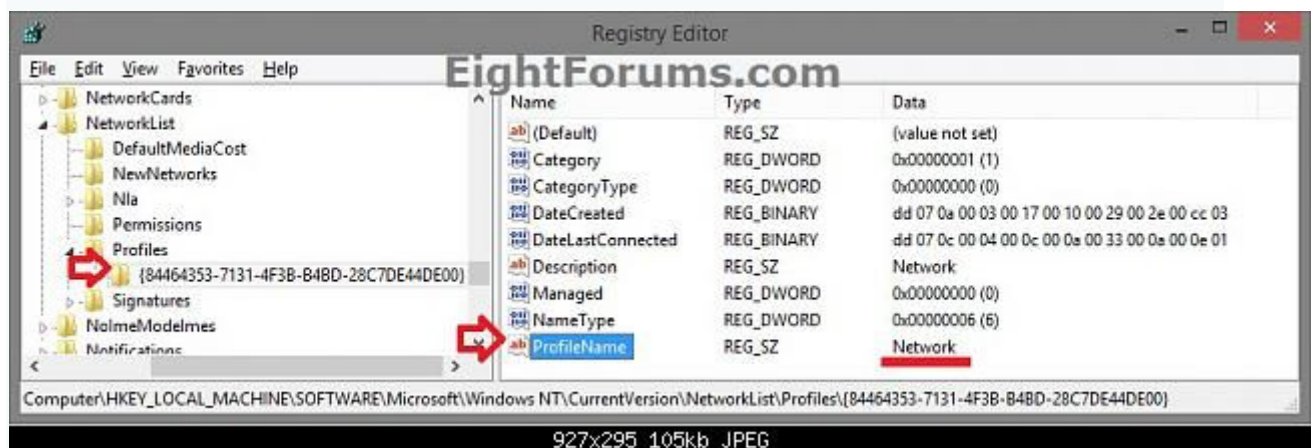
1. Press the **Windows** + **R** keys to open the Run dialog, type **regedit**, and press Enter.
2. If prompted by **UAC**, then click/tap on **Yes**.
3. In Registry Editor, navigate to the location below. (see screenshot below)

Code:

```
HKEY_LOCAL_MACHINE\SOFTWARE\Microsoft\Windows  
NT\CurrentVersion\NetworkList\Profiles
```

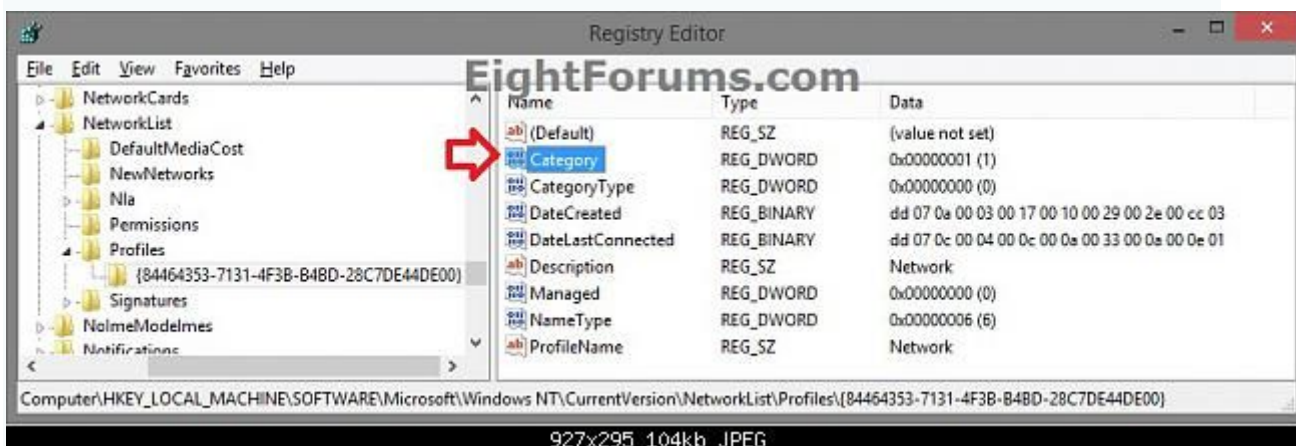


4. Double click/tap on the **Profiles** key in the left pane to expand it. Click/tap on each long GUID number subkey, and look at its **ProfileName** string value in the right pane to see if it has the current network name (ex: Network) until found. (see screenshots below)



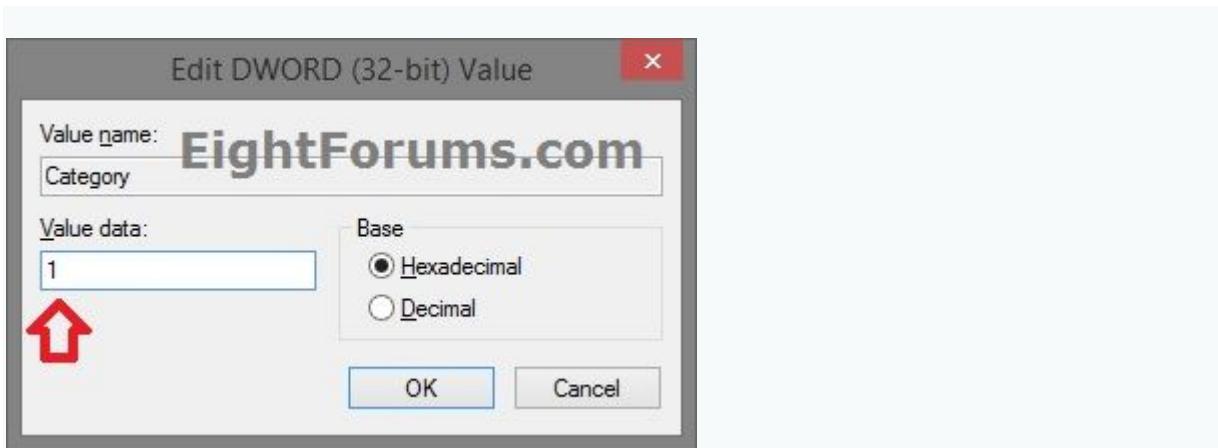


5. When you find the correct **ProfileName** for your network name, double click/tap on the **Category** DWORD value in the same right pane to modify it. (see screenshot below)



6. Type in a new Data value number for the network location you want, and click/tap on **OK**. (see screenshot below)

Network Location	Data Value
Public	0
Private	1
Domain	2



7. When finished, you can now close Registry Editor if you like.

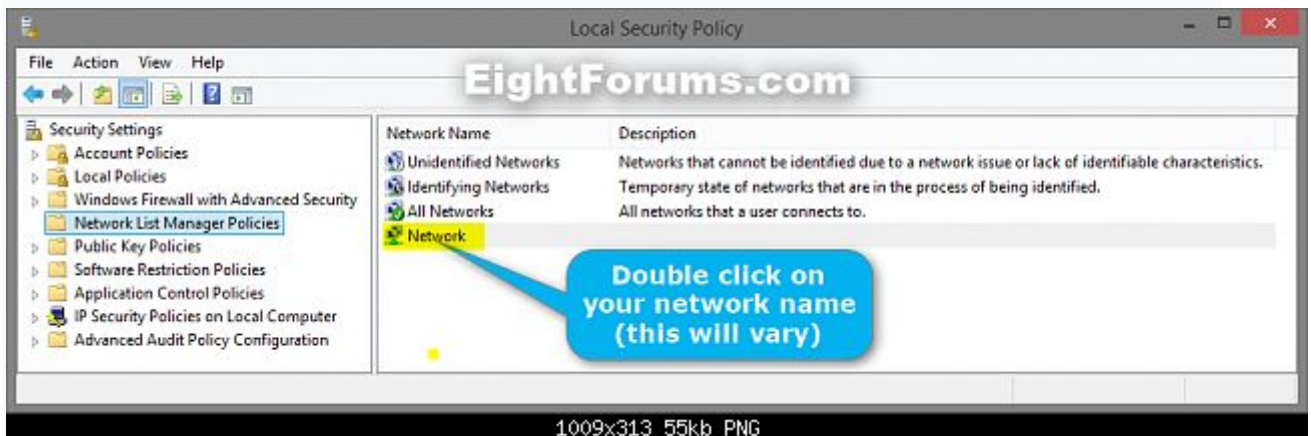
8. Sometimes you may need to **sign out and in** of your user account to apply the new network location.

## Set Network to be Private or Public in Local Security Policy

**NOTE:** This option will override the other options above.

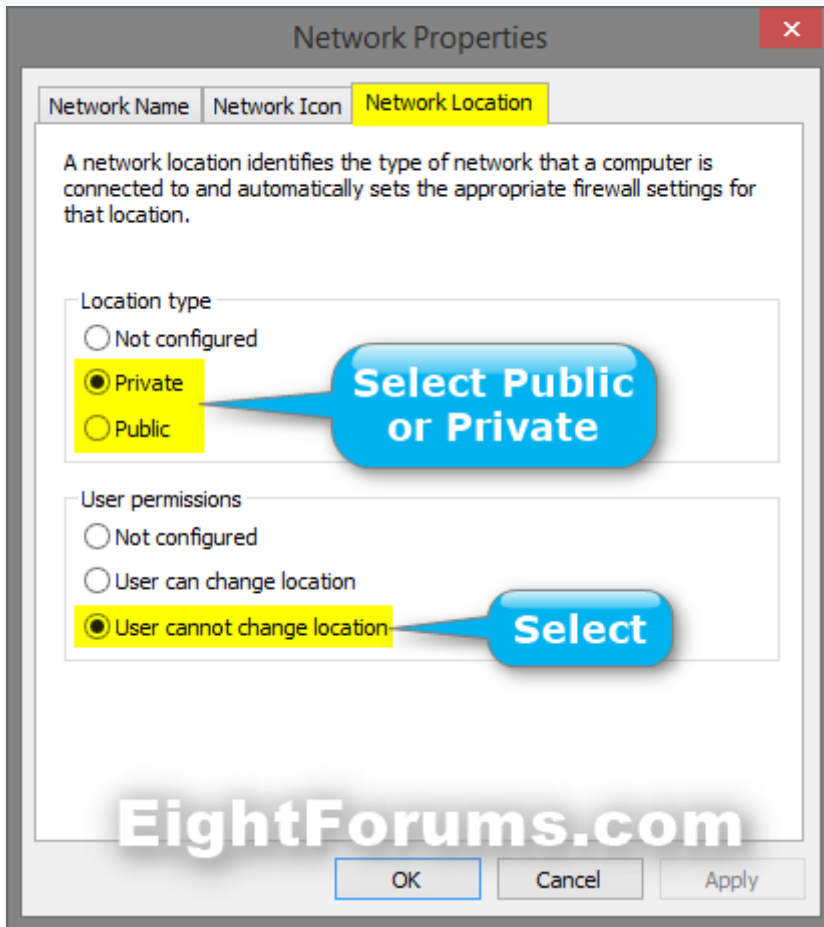
1. Open the **Local Security Policy** (secpol.msc).

2. In the left pane, click/tap on **Network List Manager Policies**. (see screenshot below)



3. In the right pane of **Network List Manager Policies**, double click/tap on your **network name** (ex: Network). (see screenshot above)

4. Click/tap on the **Network Location** tab, and do **step 5, 6, or 7** below for what you would like to set. (see screenshot below)

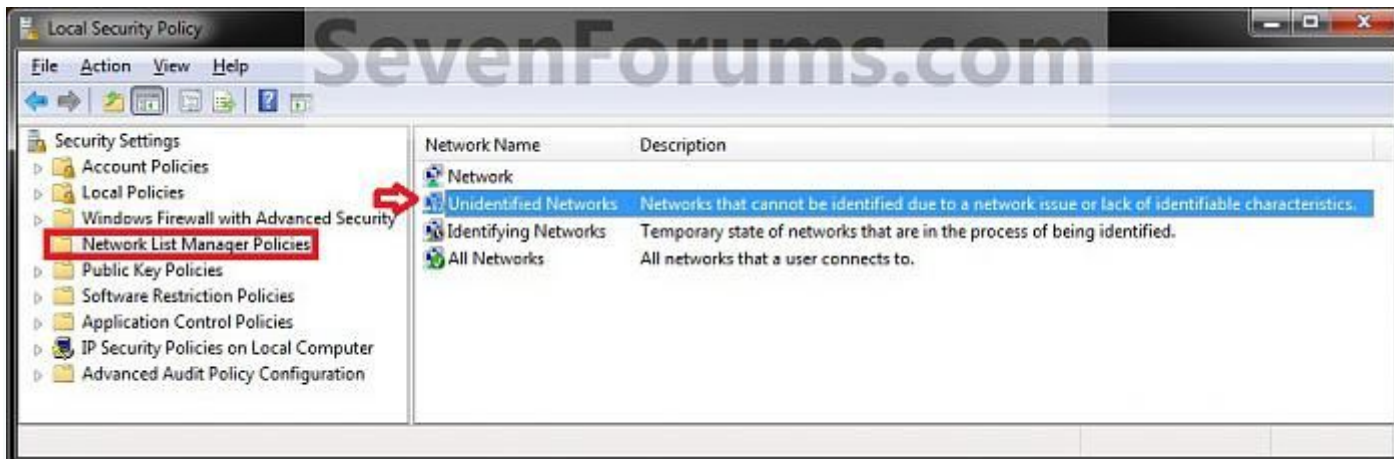


## How to Set Unidentified Networks to be a Private or Public Network Location

### Through Network List Manager Policies

1. Open the [Local Security Policy](#) editor.

A) In the left pane, select **Network List Manager Policies**. (see screenshot below)



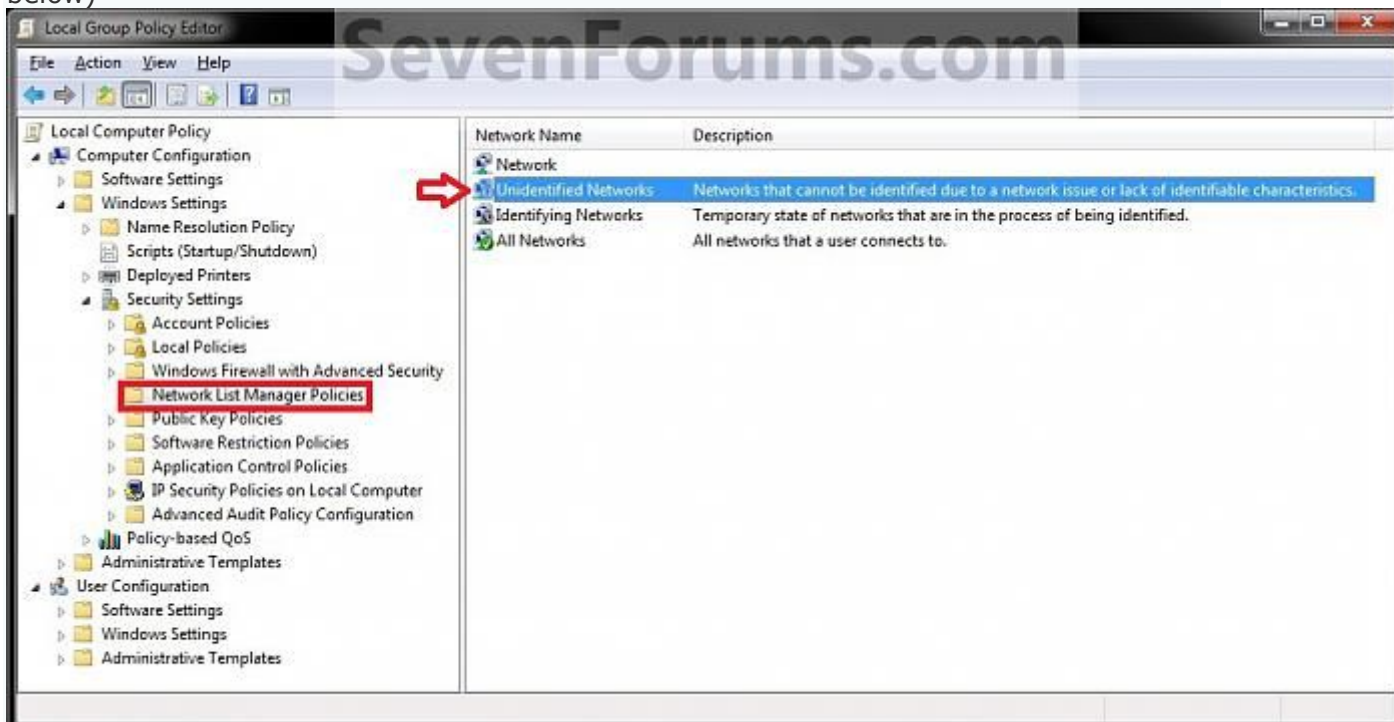
977x321 172kb JPEG

B) Go to step 3.

**OR**

**2.** Open the [Local Group Policy Editor](#).

A) In the left pane, click on to expand **Computer Configuration, Windows Settings, Security Settings,** and **Network List Manager Policies.** (see screenshot below)



1055x546 230kb JPEG

**3.** In the right pane, double click on **Unidentified Networks.** (see screenshots above)

### To Restore Unidentified Networks to Default Not Configured

**NOTE:** This allows Windows 7 to set the unidentified network to be either **Public** or **Private** (work) as it so determines automatically.

A) Under **Location type**, select (dot) **Not Configured** and click on **OK.**



B) Go to step 7.

### 5. To Set Unidentified Networks to Public Network Location

A) Under **Location type**, select (dot) **Public** and click on **OK**. (see screenshot below step 4A)

B) Go to step 7.

### 6. To Set Unidentified Networks to Private Network Location

A) Under **Location type**, select (dot) **Private** (Work) and click on **OK**. (see screenshot below step 4A)

**7.** Close the Local Security Policy or Local Group Policy Editor.

**8.** Open the **Network and Sharing Center** to see the change.

**NOTE:** You can open the **Network and Sharing Center** from within the Control Panel, or by right clicking on your Network icon in taskbar notification area.